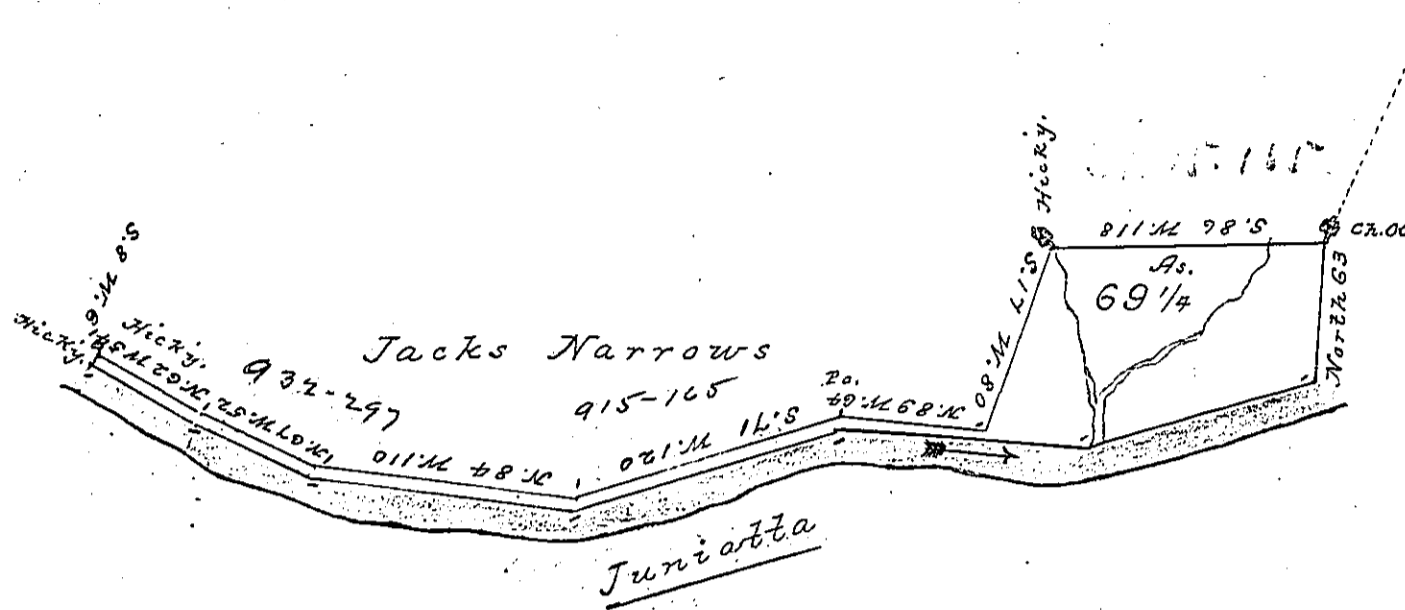


Courses & dist<sup>ns</sup> down

Juniatta  
 S 62 E. 54  
 S 67 E. 52  
 S 84 E. 110  
 N 71 E. 120  
 S 89 E. 112  
 N. 73 E. 98

Prs. 576



A Draught of a tract of land Situate in Wayne township Cumberland County containing Sixty nine acres & a quarter & the usual allowance of Six p. Cent. for roads &c<sup>a</sup> Surveyed for Francis Hamilton July the 17<sup>th</sup> 1789 in pursuance of a Warrant Dated March 9<sup>th</sup> 1787

By Sam<sup>l</sup>. Lyon D. S.

To John Lukens Esqr. }  
 Survt. Gen<sup>l</sup>.

IN TESTIMONY that the above is a copy of the original remaining on file in the Department of Internal Affairs of Pennsylvania, made conformably to an Act of Assembly approved the 16th day of February, 1833. I have hereunto set my Hand and caused the Seal of said Department to be affixed at Harrisburg, this

First day of September 1896

James W. Lusa  
 Secretary of Internal Affairs.